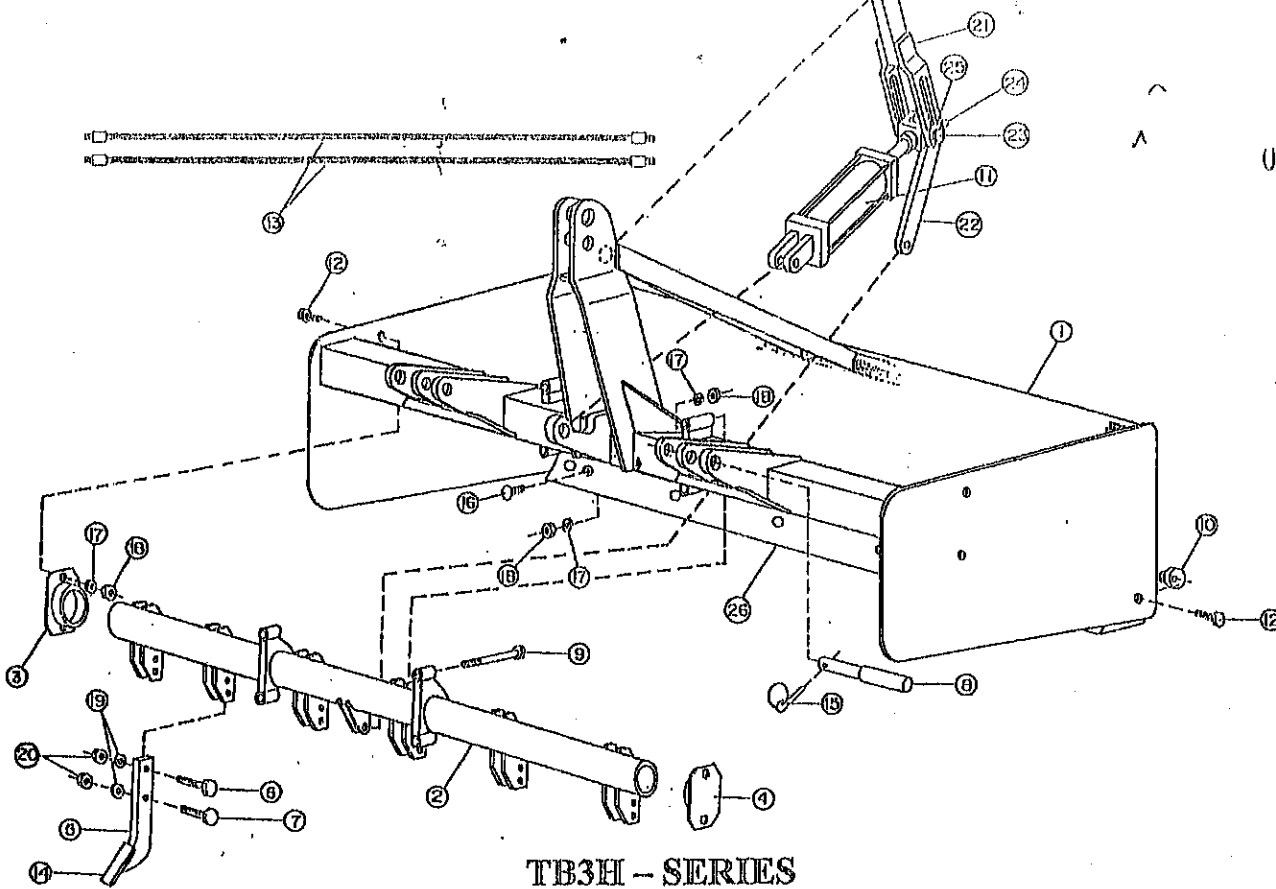


TB0, TB1, & TB2 SERIES BOX SCRAPERS

REF. #	PART #	DESCRIPTION
1		MAIN BOX & HITCH WELDMENT
2	10684	HITCH PIN, 7/8" CATEGORY I
3	T-33	HITCH PIN, 7/8" CATEGORY I (TB0-36 & TB0-42)
4	13257	HITCH PIN, CATEGORY I & II (TB2-84 & TB2-96)
5	VP252	LYNCH PIN
6	106775 -	SCARIFIER SHANK WITH WELDED ON POINT
7	10697 -	SCARIFIER POINT ONLY
8	10745	CUTTING EDGE 1/2" X 6" X 36"
	10746	CUTTING EDGE 1/2" X 6" X 42"
	10701	CUTTING EDGE 1/2" X 6" X 48"
	14420	CUTTING EDGE 1/2" X 6" X 54"
	10702	CUTTING EDGE 1/2" X 6" X 60"
	10703	CUTTING EDGE 1/2" X 6" X 66"
	10704	CUTTING EDGE 1/2" X 6" X 72"
	10705	CUTTING EDGE 1/2" X 6" X 84"
	10706	CUTTING EDGE 1/2" X 6" X 96"
9	10699	PLOW BOLT, 5/8" X 1 1/2", GR. 5
10	T-24	LOCK WASHER, 5/8"
11	T-22	HEX NUT, 5/8"
12	10685	SHANK KEY & CHAIN
	10686	SHANK KEY ONLY
	10687	SHANK CHAIN ONLY

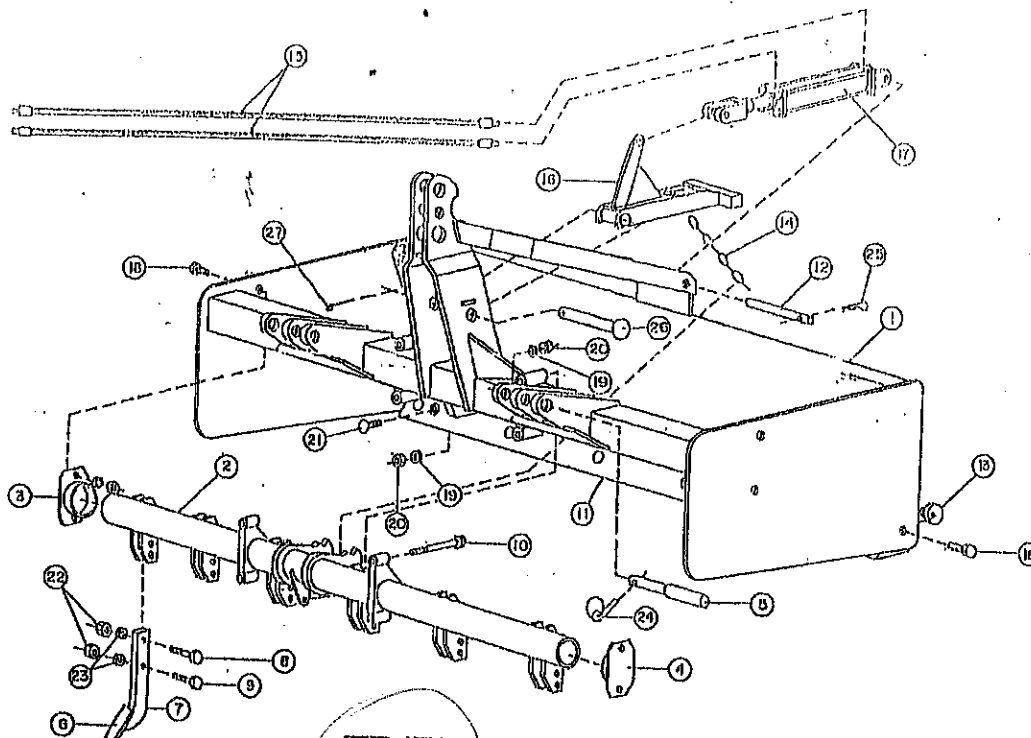
X 15513 CRIMPON
STYLE

dep



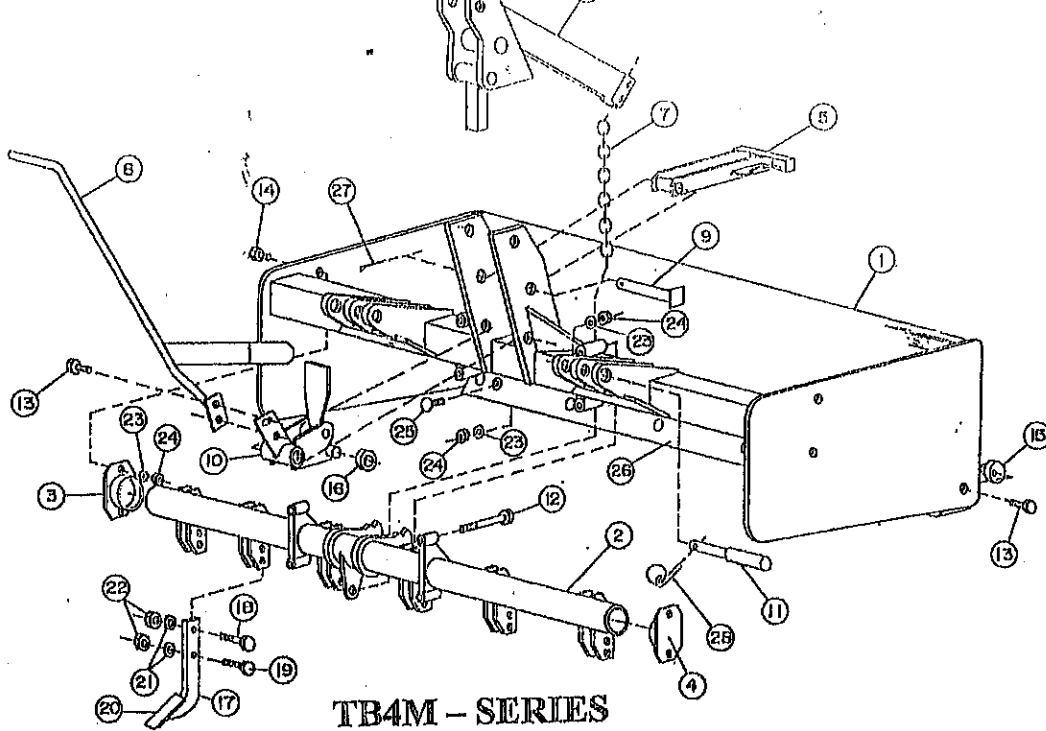
**TB3H - SERIES
HYDRUALIC BOX BLADE**

REF. NO.	PART #	
1	13177	MOLDBOARD & BOX WELDMENT, 66"
	13178	MOLDBOARD & BOX WELDMENT, 72"
	13179	MOLDBOARD & BOX WELDMENT, 78"
	13180	MOLDBOARD & BOX WELDMENT, 84"
2	13181	SCARIFIER SHAFT WELDMENT, 66"
	13182	SCARIFIER SHAFT WELDMENT, 72"
	13183	SCARIFIER SHAFT WELDMENT, 78"
	13184	SCARIFIER SHAFT WELDMENT, 84"
3	12495	RIGHT HAND SCARIFIER SHAFT BEARING
4	12485	LEFT HAND SCARIFIER SHAFT BEARING
5	12567	SCARIFIER SHANK WITH POINT
6	12568	HEX BOLT 1/2" X 2 1/2" Gr. 5
7	T-738	HEX BOLT, 1/2" X 3 Gr. 2
8	13257	HITCH PIN CATEGORY 1 & 2
9	T-749	HEX BOLT, 5/8" x 6 1/2" Gr. 5
10	12526	REAR BLADE, CAM
11	11743	HYDRAULIC CYLINDER, 3 X 8
12	T-740	HEX BOLT 5/8" X 2" GR. 2
13	12842	HYDRAULIC HOSE, 66"
14	10697	SCARIFIER POINT ONLY
15	VP252	LYNCH PIN
16	10699	PLOW BOLT 5/8" X 1 1/2"
17	T-24	5/8" LOCK WASHER
18	T-22	5/8" HEX NUT
19	T-25	LOCK WASHER, 1/2"
20	T-26	HEX NUT, 1/2"
21	13941	CYLINDER ARM GUIDE WELDMENT
22	13944	HYDRAULIC SCARIFIER RETRACTOR ARM WELDMENT
23	13947	CYLINDER ARM GUIDE PIVOT PIN
24	9979	HAIR PIN CLIP
25	T-606	FLAT WASHER, 1 1/2"
26	10703	CUTTING EDGE, 66"
	10704	CUTTING EDGE, 72"
	12566	CUTTING EDGE, 78"
	10705	CUTTING EDGE, 84"



**TB4H-SERIES
HYDRUALIC BOX BLADE**

REF. NO.	PART #	
1	12569	MOLDBOARD & BOX WELDMENT, 66"
	12570	MOLDBOARD & BOX WELDMENT, 72"
	12571	MOLDBOARD & BOX WELDMENT, 78"
	12572	MOLDBOARD & BOX WELDMENT, 84"
	12573	MOLDBOARD & BOX WELDMNET, 96"
2	12711	SCARIFIER SHAFT WELDMENT, 66"
	12712	SCARIFIER SHAFT WELDMENT, 72"
	12713	SCARIFIER SHAFT WELDMENT, 78"
	12714	SCARIFIER SHAFT WELDMENT, 84"
	12715	SCARIFIER SHAFT WELDMENT, 96"
3	12495	RIGHT HAND SCARIFIER SHAFT BEARING
4	12485	LEFT HAND SCARIFIER SHAFT BEARING
5	13257	HITCH PIN CATEGORY 1 & 2
6	10697	SCARIFIER POINT ONLY 15513
7	12567	SCARIFIER SHANK, WITH POINT
8	12568	HEX BOLT 1/2" X 2 1/2" Gr. 5
9	T-738	HEX BOLT, 1/2" X 3 Gr. 2
10	T-749	HEX BOLT, 5/8" x 6 1/2" Gr. 5
11	10703	CUTTING EDGE, 66"
	10704	CUTTING EDGE, 72"
	12566	CUTTING EDGE, 78"
	10705	CUTTING EDGE, 84"
	10706	CUTTING EDGE, 96"
12	9611	CYLINDER PIN, 1" X 6 1/4"
13	12526	REAR BLADE, CAM
14	12718	SCARIFIER LIFT CHAIN, 12 LINKS
15	12842	HYDRAULIC HOSE, 66"
16	12659	SCARIFIER LATCH
17	11743	HYDRAULIC CYLINDER, 3 X 8
18	T-740	HEX BOLT 5/8" X 2" GR. 2
19	T-24	5/8" LOCK WASHER
20	T-22	5/8" HEX NUT
21	10699	PLOW BOLT 5/8" X 1 1/2"
22	T-26	HEX NUT, 1/2"
23	T-25	LOCK WASHER, 1/2"
24	VP252	LYNCH PIN
25	9979	HAIR PIN CLIP
26	12474	PIVOT PIN
27	10050	COTTER PIN, 3/16" X 2 1/2"



**TB4M - SERIES
MANUAL RETRACTABLE SHANK - BOX BLADE**

REF. NO.	PART #	DESCRIPTION
1	12706	MOLDBOARD & BOX WELDMENT, 66"
	12707	MOLDBOARD & BOX WELDMENT, 72"
	12708	MOLDBOARD & BOX WELDMENT, 78"
	12709	MOLDBOARD & BOX WELDMENT, 84"
	12710	MOLDBOARD & BOX WELDMENT, 96"
2	12711	SCARIFIER SHAFT WELDMENT, 66"
	12712	SCARIFIER SHAFT WELDMENT, 72"
	12713	SCARIFIER SHAFT WELDMENT, 78"
	12714	SCARIFIER SHAFT WELDMENT, 84"
	12715	SCARIFIER SHAFT WELDMENT, 96"
3	12495	RIGHT HAND SCARIFIER SHAFT BEARING
4	12485	LEFT HAND SCARIFIER SHAFT BEARING
5	12488	SCARIFIER LATCH
6	12477	TOP MAST ASSEMBLY
7	12718	SCARIFIER LIFT CHAIN, 19"
8	12528	RELEASE LEVER
9	12474	PIVOT PIN
10	12717	RELEASE ARM
11	13257	HITCH PIN CATEGORY 1 & 2
12	T-749	HEX BOLT, 5/8" X 6 1/2" Gr. 5
13	T-733	HEX BOLT, 1/2" X 1 1/2", GR. 2
14	T-740	HEX BOLT 5/8" X 2" GR. 2
15	12526	REAR BLADE, CAM
16	12716	RELEASE ROLLER
17	12567	SCARIFIER SHANK, WITH POINT
18	12568	HEX BOLT 1/2" X 2 1/2" Gr. 5
19	T-738	HEX BOLT, 1/2" X 3 Gr. 2
20	10697	SCARIFIER POINT ONLY
21	T-25	LOCK WASHER, 1/2"
22	T-26	HEX NUT, 1/2"
23	T-24	5/8" LOCK WASHER
24	T-22	5/8" HEX NUT
25	10699	PLOW BOLT 5/8" X 1 1/2"
26	10703	CUTTING EDGE, 66"
	10704	CUTTING EDGE, 72"
	12566	CUTTING EDGE, 78"
	10705	CUTTING EDGE, 84"
	10706	CUTTING EDGE, 96"
27	10050	COTTER PIN, 3/16" X 2 1/2"
28	VP252	LYNCH PIN